



**Electrolux**  
PROFESSIONAL

**Stainless Steel Preparation  
1770 mm Stainless Steel Shelving  
with 4 Solid Shelves**

ITEM # \_\_\_\_\_

MODEL # \_\_\_\_\_

NAME # \_\_\_\_\_

SIS # \_\_\_\_\_

AIA # \_\_\_\_\_



132946 (NSC1170)

Stainless steel Shelving with  
4 solid shelves, 1170mm

**Short Form Specification**

Item No. \_\_\_\_\_

Made in stainless steel. The two intermediate shelves are height-adjustable. Load capacity per shelf: average of 150 kg/m<sup>2</sup>, evenly distributed.

**Construction**

- Designed to bear a maximum total load of 600kg; the load can be positioned at various heights thanks to the shelves.
- Model constructed entirely in stainless steel, with solid stainless steel shelves.

APPROVAL: \_\_\_\_\_

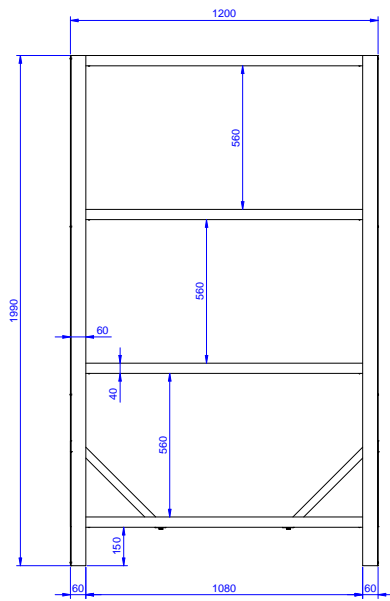


Experience the Excellence  
[www.electroluxprofessional.com](http://www.electroluxprofessional.com)

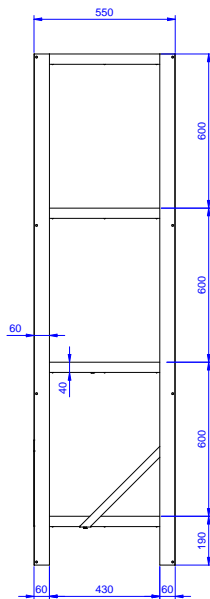


## Stainless Steel Preparation 1770 mm Stainless Steel Shelving with 4 Solid Shelves

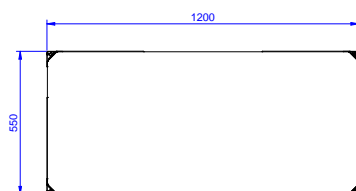
Front



Side



Top



### Key Information:

External dimensions, Width:	1200 mm
132946 (NSC1170)	1200 mm
External dimensions, Depth:	550 mm
External dimensions, Height:	1990 mm
Max loading weight:	600 Kg kg
Shelves number:	
Net weight:	37 kg